



TK International
020 7794 8700
www.t-k.co.uk

Residential Sales
Residential Lettings
Property Management

Sales Office:
9 Heath Street
Hampstead
London NW3 6TP
E: sales@t-k.co.uk

Lettings Office:
16-18 Heath Street
Hampstead
London NW3 6TE
E: lettings@t-k.co.uk

tk.international
TK International
TK International

Est.
1998



Pearson Square Fitzrovia W1T

This stunning ninth floor 2 bedroom apartment has been beautifully appointed throughout to a high standard and is ideally situated in a landmark new development with 24 porterage, secure underground parking immaculate communal areas and ample storage.

The apartment benefits from expansive views of the city from the large balcony, Lutron lighting, underfloor heating and comfort cooling throughout and a fully fitted kitchen with utility area and large master bedroom suite with a walk in wardrobe.

The property is located in the heart of Fitzrovia, with the shops, bars and restaurants of Charlotte Street, Oxford Street and Soho all within easy walking distance. Transport links are excellent with the Northern Line (Goodge Street), and Central Line (Oxford Street and Tottenham Court Road) Underground Stations within easy reach.

This is a truly exceptional property in a fantastic location and high quality development.

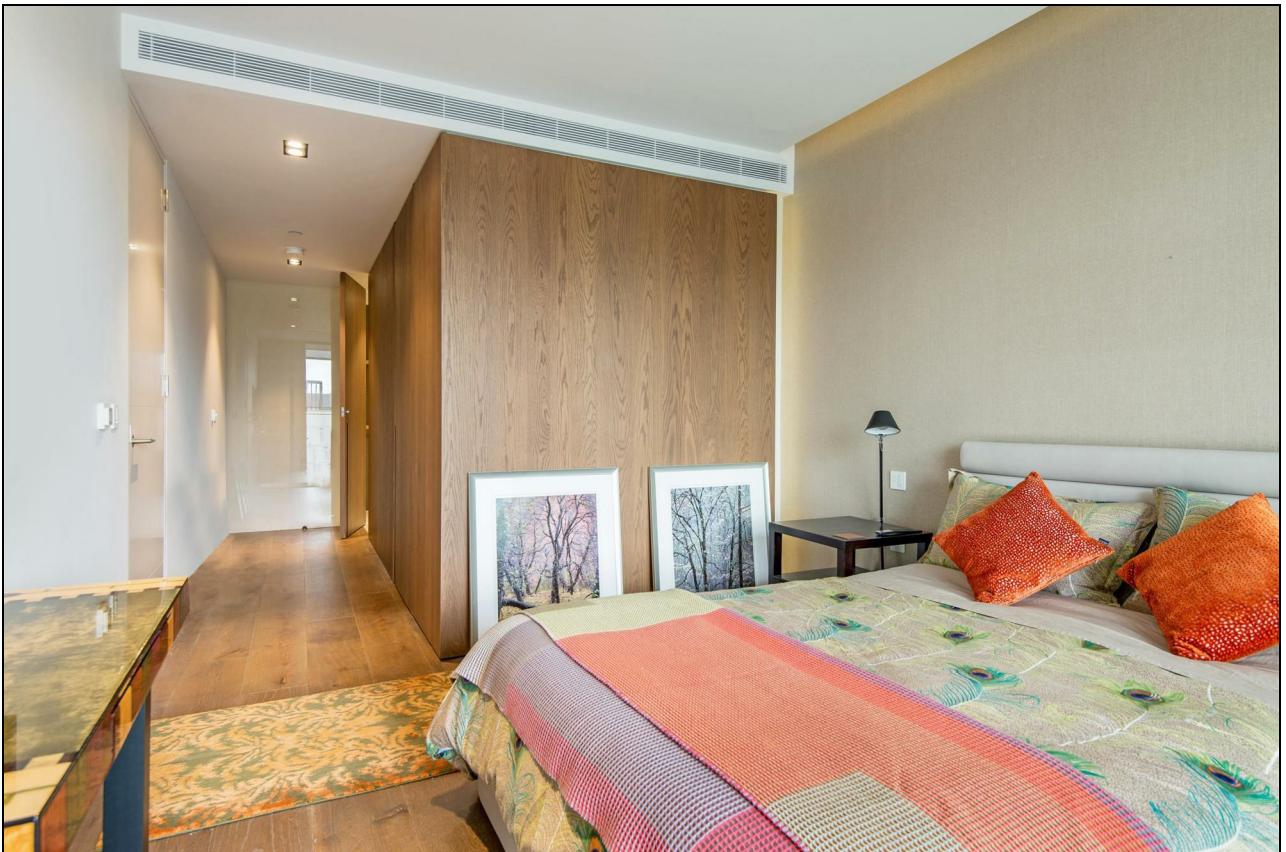
EPC: C

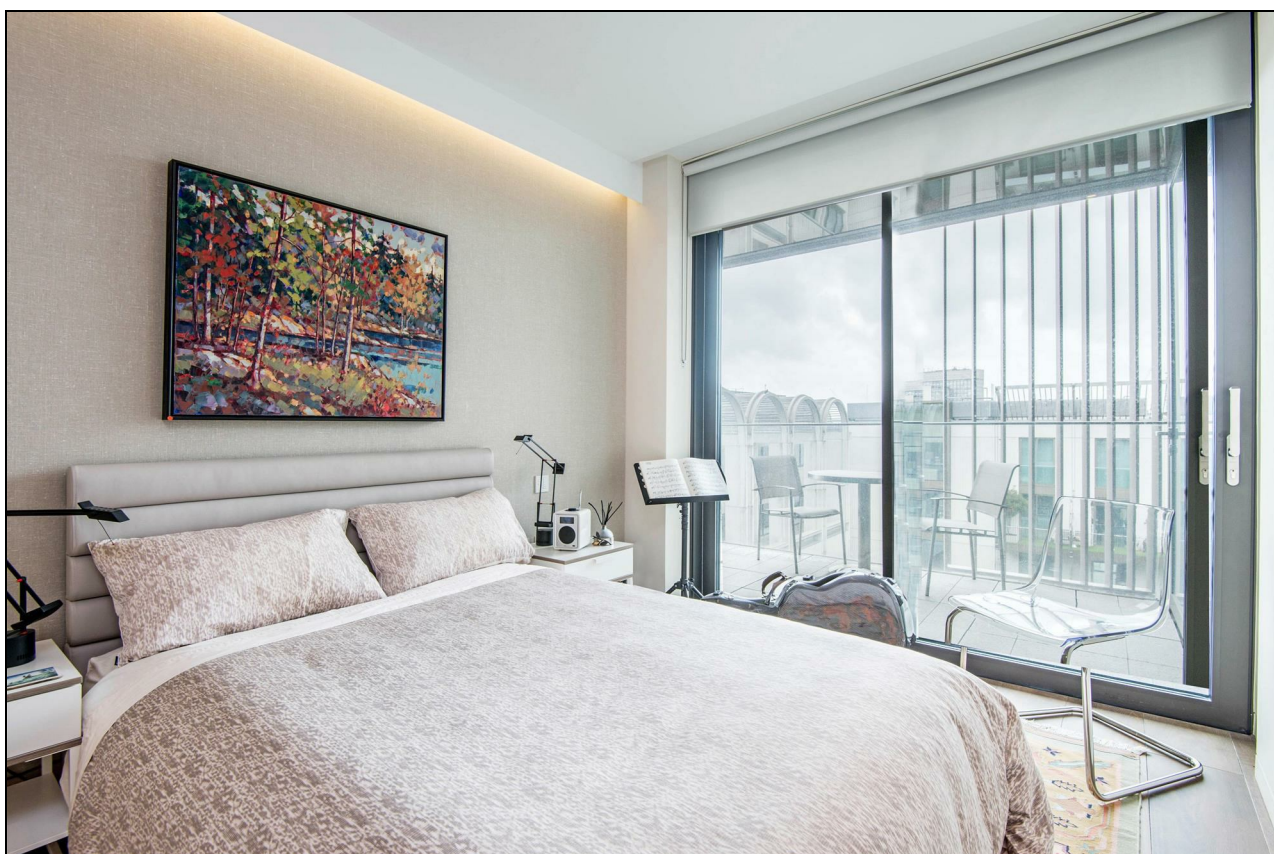
£1,650 Per Week

SOLE AGENT



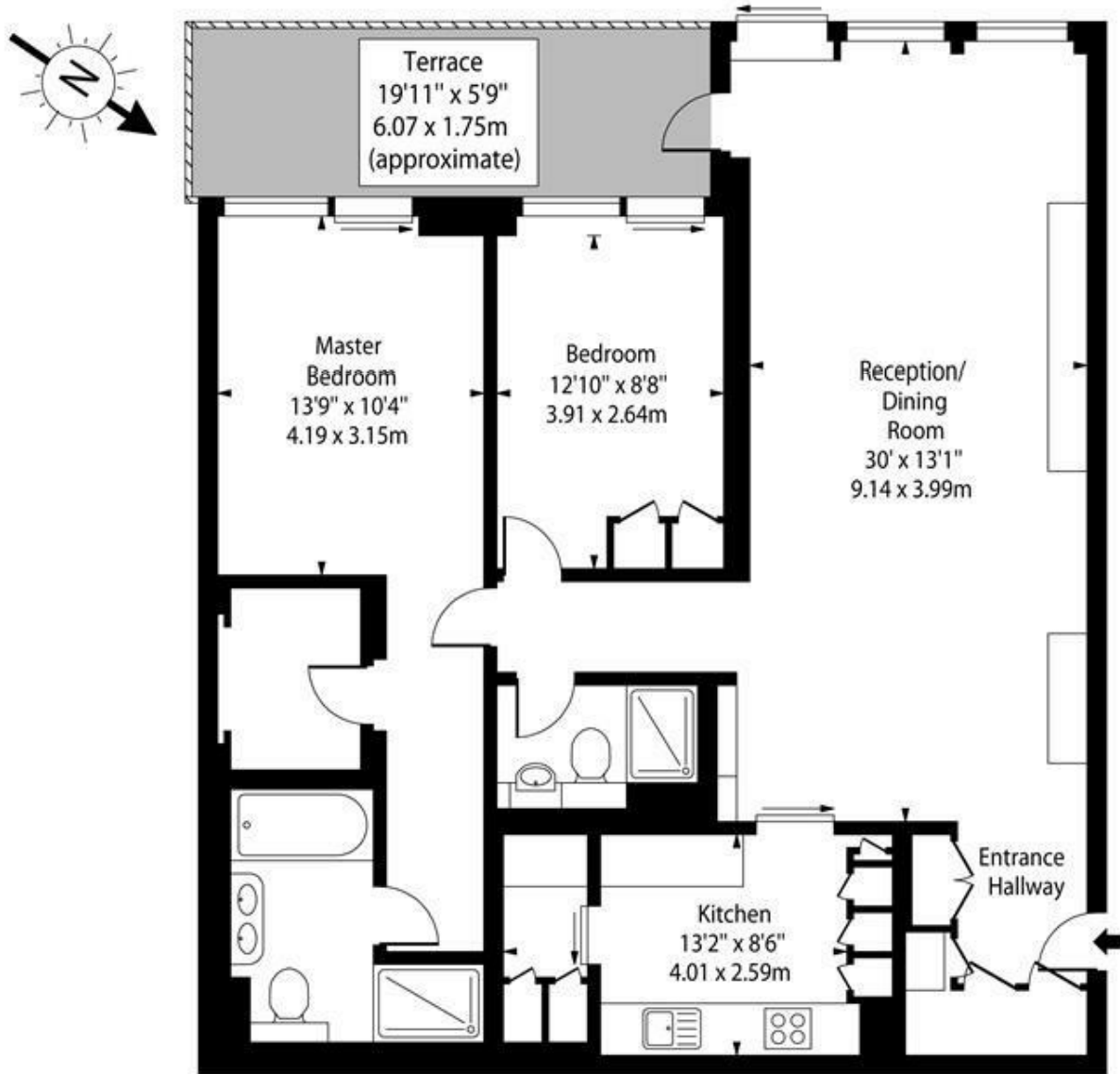








Pearsons Square,
Fitzrovia, W1T



Ninth Floor

Approx Gross Internal Area 1158 Sq Ft - 107.58 Sq M

For Illustration Purposes Only - Not To Scale Floor Plan by www.nogaphotostudio.com Ref: No.40575

This floor plan should be used as a general outline for guidance only. Any intending purchaser or lessee should satisfy themselves by inspection, searches, enquiries and full survey as to the correctness of each statement. Any areas, measurements or distances quoted are approximate and should not be used to value a property or be the basis of any sale or let.